

# GUIDE TO RE-SIZING EMBROIDERY DESIGNS

## WHAT TO CONSIDER WHEN RE-SIZING DESIGNS

Anita Goodesign is not responsible for the results if you choose to re-size your designs, but we can provide you with important points to remember when deciding to do so.

Every Anita Goodesign collection will provide you with re-sizable files. With these files, you are able to re-size the design using your embroidery editing software.

### Rule of Thumb

Large designs tend to be more detailed while smaller designs are less detailed. If you go too far reducing or enlarging a design, there will be problems.

When reducing a large design with a considerable amount of detail, you must consider that this will result in stitches becoming too closely packed together.

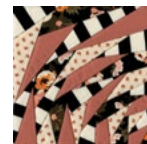
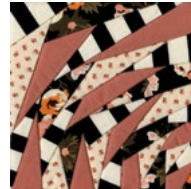
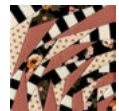
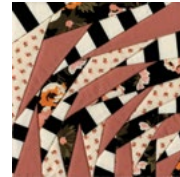
When enlarging a smaller design with minimal amount of detail the design often becomes distorted.

### Editing Software

Re-sizing depends highly on the quality of embroidery editing software that you have. Software tends to be packaged with your machine purchase so be sure to check with your dealer as to whether or not you may already own software and what type/brand of software that may be.

### Tips on Quality Embroidery Editing Software

Here is a list of things to keep in mind when considering what type/brand



of embroidery editing software you may want to purchase:

1. Does it eliminate stitches when the design is reduced?
2. Are stitches added when the design is enlarged?
3. Does the software read stitch lengths and column widths?

Quality embroidery editing software will do the above 3 things intuitively. It is up to you to know this information. Consult your dealer and do your research.

## OPERATING EMBROIDERY EDITING SOFTWARE

Editing your own designs takes practice and skill. Obviously, the more times you practice the more skilled you become, so do not get discouraged when re-sizing your designs. Practice makes perfect. Talk with your dealer about classes you could take or possibly classes that they offer. Even if they do not provide such classes, they can often lead you in the right direction

## Anita Goodesign Quilting & Embroidery Sizes

Our quilting collections come in at least 4 sizes. Some of our collections include a 5th size, which is our largest.

Square blocks:

AA: 9" x 9", A: 7.8" x 7.8", B: 6.8" x 6.8", C: 5.8" x 5.8", D: 4.8" x 4.8"

Rectangular blocks:

AA: 9.1" x 13.8", A: 7.8" x 11.8", B: 6.8" x 10.2", C: 5.8" x 8.8", D: 4.8" x 7.2"

Our embroidery designs will vary in size. We try to accommodate a variety of hoop sizes and most of our designs will come in multiple sizes.

### Why Certain Designs Aren't Included in Smaller Sizes

Here at Anita Goodesign we take a lot of pride in our digitizing team and the quality of work that is put into each design. If a design has not been included in a smaller size, it is at the discretion of the digitizer to uphold the integrity of the design.